

### Advanced Intersection Control



# XCam-p

XCam-p is a presence detection sensor designed to replace or supplement inductive loops.

Designed for intersections, ramp metering, and smart parking applications, XCam-p is a non-intrusive above-ground detector that eliminates the constraints of embedded loops. Its simple installation and minimal maintenance needs eliminate lane closures and the need to cut road surfaces.

XCam-p can be connected to any traffic controller using the XCom universal communication board. XCam-p is IP addressable and can directly communicate via IP to newer generations of traffic controllers.

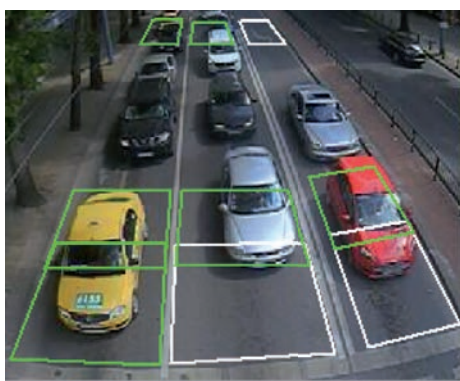
XCam-p features a WDR (Wide Dynamic Range) CMOS sensor and an image optimization module to enhance detection performances in any lighting conditions.

## FUNCTIONS

- Vehicle presence detection
- Stop bar detection
- Advanced detection
- Mid-block detection

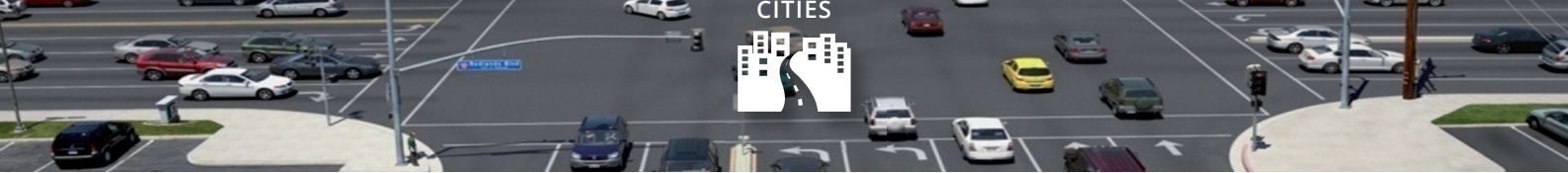
## FEATURES

- Wide Dynamic Range (WDR) sensor for enhanced detection performances
- Ethernet and RS485 communications, IP addressable
- Color video streaming including OSD for detection zone status display



## KEY BENEFITS

- Above-ground detector
- High accuracy in all weather and lighting conditions
- Digital zoom allows seamless installation on the field
- Vibration & shock detection



## Technical specifications

<b>Focal Length:</b>	3.5 mm (other focal lengths upon request)
<b>Digital Zoom:</b>	x1.5 / x3
<b>Sensor Type / Resolution:</b>	CMOS HDR 1/2.7" – COLOR - 1280 x 800 (WXGA)
<b>Power Supply / Consumption:</b>	+12/24V AC/DC – < 3.2W
<b>Communications:</b>	RS-485 / Ethernet
<b>Reliability features:</b>	Shock detection – Vibration detection
<b>Operating Temperature:</b>	-34°C to +75°C (-30°F to +167°F)
<b>Operating Humidity:</b>	0 to 95% RH, non condensing
<b>Storage Conditions:</b>	Dry, indoor storage
<b>Regulatory:</b>	NEMA-TS2 Environmental Part / CE / FCC part 15 Class A
<b>Material / IP Rating:</b>	Injection molded polycarbonate / IP 67
<b>Operation status:</b>	LED
<b>Weight:</b>	1.5kg (3.3 lbs) – with mounting
<b>Dimensions:</b>	132 x 254 x 124 mm (5,2" x 10" x 4,9") - without mounting
<b>Mounting:</b>	Included for horizontal or vertical mounting on masts or poles

This smart sensor is a cost-effective solution for presence detection and inductive loop replacement

## Easy and efficient installation

**XCam-p** eliminates constraints imposed by embedded loops for installation and maintenance: lane closures, cutting road surface, etc.

Because it is above-ground and equipped with smart tools such as a digital zoom installation of **XCam-p** in the field is seamless and cost-effective.



## APPLICATIONS

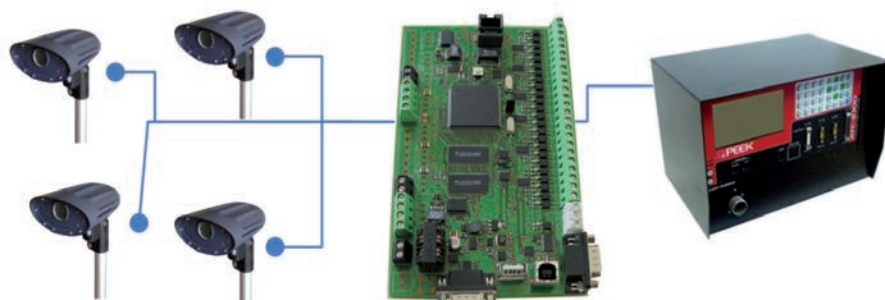
Inductive loop direct replacement

Presence detection

## Communications

**XCam-p** can be connected to any traffic controller using **XCom** a universal communication board. **XCam-ng** in the field is seamless and cost-effective.

Check  
Intersection  
Control in action



[www.citilog.com](http://www.citilog.com)