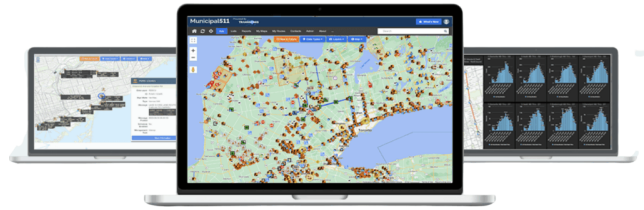


## Municipal 511 with Esri Integration

### Transnomis Solutions

**Municipal 511** is a public-facing and agency-coordination map platform that displays road events, closures, restrictions, and infrastructure conditions. The Esri-enabled version enhances data accuracy, consistency, and interoperability across agencies.



### Description

### Key Features

- One unified regional road information map
- Public and private data layer options
- Integration with Waze, emergency responders, and GIS systems
- Support for cameras, VMS, weather stations, and traffic data
- Direct linkage with Permit Central for project coordination

### Specifications

### Benefits

- Real-time road information improves safety and traveler awareness
- Reduced public confusion and call volumes
- Faster cross-agency coordination and data sharing
- Future-ready Esri-based data management standards

### Use Cases

- Traveler information portals
- Emergency routing and detour planning
- Work zone coordination
- Regional mobility dashboards

**For more information: 1 800 363-5913**

Created on 07.03.2026 at 13:04:34 EST

