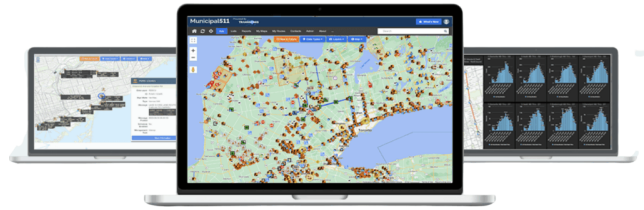


ITS Central - Lane Reversal System

Transnomis Solutions

The ITS Central **Lane Reversal System** provides automated control over reversible lanes on critical transportation corridors. Designed for reliability and operator efficiency, the system coordinates gates, signals, sensors, cameras, and VMS into a single configurable workflow for safe lane direction changes.



Description

Key Features

- Automated lane switching sequences
- Real-time awareness dashboards with bridge schematics
- Pre-programmed response scenarios for incidents and weather
- Integration with sensors, CCTV, VMS, gates, and lane control signs
- Centralized map-based control interface

Specifications

Benefits

- Reduced manual workload and operational risk
- Faster and safer lane reversal execution
- Improved congestion management during peak flows
- Future-proof system adaptability and customization capabilities

Use Cases

- Reversible commuter bridge operations
- Fixed-capacity corridors requiring directional flow management
- Emergency routing and evacuation scenarios

For more information: 1 800 363-5913

Created on 03.04.2026 at 13:23:40 EDT

