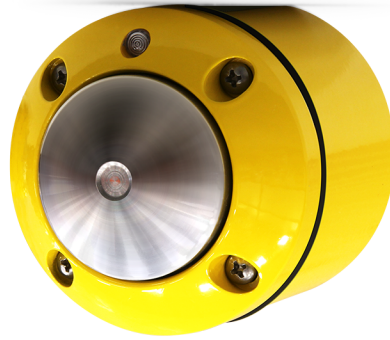


BCU-240 - Pedestrian Push Button

Campbell Company Pedestrian Safety

The BCU-240 pedestrian push button is extremely reliable. It is designed to be weather resistant and provide advanced functionalities.



Description

The BCU-240 pedestrian push button uses piezoelectric detection and digital signal transmission. It can be configured to memorize each time it is pressed by a pedestrian. Calls are confirmed by a red LED indicator light and a tone; the light stays on until the requested phase is deployed.

The button is fitted with a full neoprene O ring that is guaranteed watertight. It is compliant with the provisions of the Manual on Uniform Traffic Control Devices (MUTCD) in the United States.

The BCU-240 pedestrian push button is covered by a 5-year warranty.

Specifications

General characteristics

- 6061-T6 aluminium housing
- Machined stainless steel or painted aluminium button
- Stainless steel terminals and connectors
- IP68-rated protection
- Yellow painted components

Technical characteristics

- Power supply voltage: 12 to 24 VDC
- Operating temperature range: -40 to +125°C (-40 to 257°F)
- Actuating pressure: 3 to 5 N (2.2 to 3.7 lbf)
- Expected service life: over 100 million operations
- Exterior diameter: 76 mm (3")



For more information: 1 800 363-5913

Created on 29.08.2025 at 01:53:17 EDT